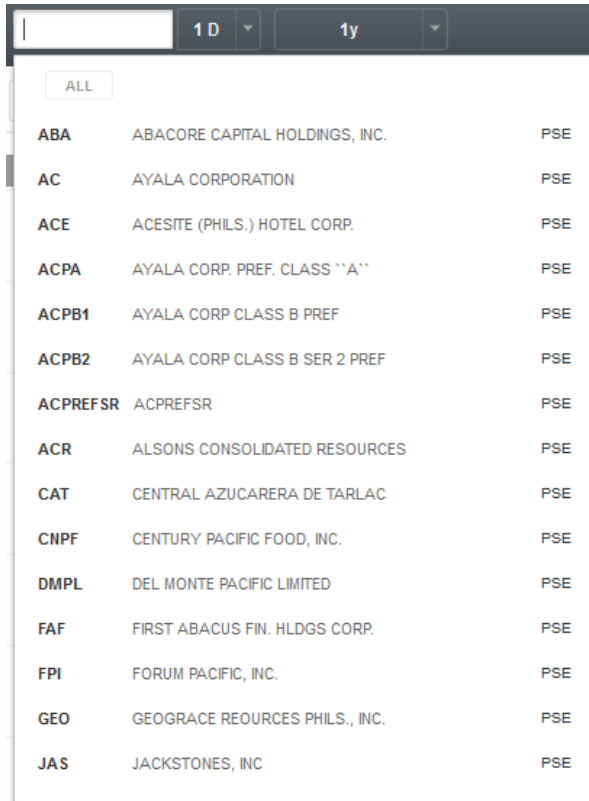


## Loading Chart Data

To get started with COL's HTML5 Charting App, simply type a symbol in the text box in the upper left of the screen.

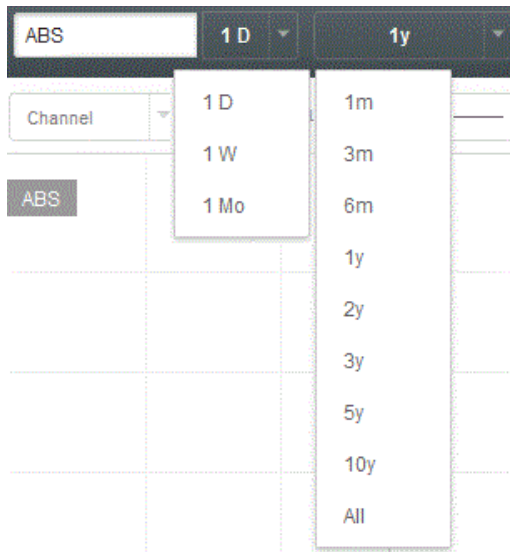


As you begin to type a code in the text box, a choice box will provide you with a list of matching securities. Either click on the desired symbol from the dropdown list, or continue typing the full symbol and hit enter.



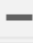

## Changing Date Ranges

You can change the period of a chart as well as its Date Range by clicking on the periodicity or range date menus to the right of the symbol textbox.



Select among the preset periods (daily weekly or monthly or a specific time frame) to call out a custom period. You can also choose the amount months or years to show into a graph.

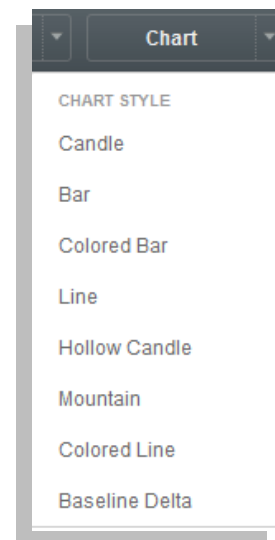
**On a touch screen device:** Change periodicity by placing three fingers on the screen and dragging them left or right. Dragging left will increase periodicity and dragging right will decrease it.

[Screen Shortcut:   increase (zoom out) data range or decrease (zoom in) data range]

## Changing Chart Styles/Types/Scales

By default, COL's HTML5 Chart App displays candlestick charts. To change the chart type, click on the "Chart" button to bring up a menu of available chart types, which includes:

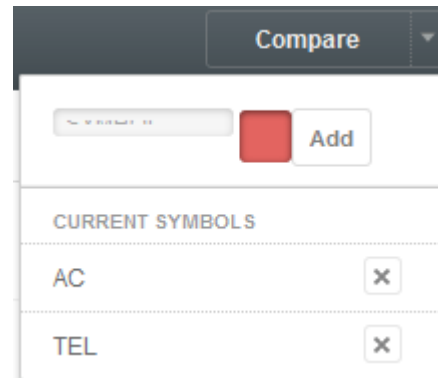
Style	Type	Scale
Candle	Heikin-Ashi	Logarithmic (Log)
Bar	Kagi	
Colored Bar	Line Break	
Line	Point & Figure	
Hollow Candle	Range Bars	
Mountain	Renko	
Colored Line		
Baseline Delta		



While most charts display a data point for each increment of a given period of time, range charts display a data bar for a given change in price. Because of this, selecting "Range Chart" from the "Chart" options menu will automatically alter the x-axis and override your periodicity selection. Checking or unchecking a Chart Type will activate it or deactivate it.

## Comparing securities

You can compare securities with one another by using the Compare tool. Simply click on the Compare button and enter into the text box the security code of the companies you would want to review. To remove a security choice, simply (x) deselect the security by clicking on the (X) besides it.



## Drawing and Identifier Tools

You can use the Select Tool button to activate Drawing or Identifier tools when you need to compose trendlines, channels, Fibonacci retracements or make annotations to your chart. A list of choices to choose from will be shown when the Select Tools button is pressed. When you select a drawing tool, a toolbar for drawing with settings for that tool will appear below the main toolbar. You can edit the color or style of the drawing or annotation.

You can also choose to activate crosshairs to better view certain chart periods and view specific date information like the periods Open, High, Low, Close and Volume figures. You can use the Clear Drawings command to erase or clear any drawings you have implemented or you could right click on any drawings to erase it specifically.



The Measure tool allows you to easily determine the price and period distance between two data points on a chart. Select the tool from the “Draw” dropdown menu, then click on the first data point on the chart. As you move towards the second data point, a line will extend between the selected point and your cursor. In the drawing toolbar, you’ll see a read-out of the price difference (as an absolute value and a percentage) and number of periods (bars) between the selected point and your cursor. Clicking on another point will lock the measurement data in the toolbar and remove the line from the chart.

## Navigating through the Chart

As you hover your mouse pointer over the chart, a set of invisible crosshairs will follow your cursor on the chart. Markers will auto track the X and Y-axes to denote the date/time and price of your cursor’s current location. On the upper right you will see price values and volume values change as you scroll


O: 37.3000 H: 37.8000 V: 7.58m  
C: 37.2000 L: 37.0500 D: 07/30/2015

through various points of your graph.

You can make the crosshairs visible by choosing the Select Tools button and activating the Crosshairs tool. To hide it, click None.

You can use the arrow keys ← → to scroll left or right into the data points, one bar at a time. You can also compress or widen price bars by scrolling up or down your mouse wheel. Another option is to press CTRL-Left Arrow or CTRL Right-Arrow on a PC or “opt + left/right arrow” on a Mac to zoom in and out

You can also click, hold and drag on any part of the chart screen to move the data points around. If you move prices into the past and you wish to move back to the present date, click

on the  symbol which will appear on the bottom right of the chart. This will correct the display to the present date. You can also click on your PC’s HOME key (or “fn + left arrow” on a Mac) to achieve the same effect.



You can widen or narrow the price range scales or date range scales on the screen by clicking, holding & and dragging vertically or horizontally along the price/date axes areas.

#### On a touch screen device:

- Scroll through the chart in a given direction by dragging two fingers on the screen.
- Reposition the chart vertically by double tapping the chart.
- Reposition the chart horizontally by double tapping again.
- Zoom in or out by using the standard pinch and expand gesture (placing two fingers on the screen and pinch or expand your fingers).
- Alter an axis by pinching and expanding on the axis.
- Reposition the chart vertically by double tapping the chart.
- Reposition the chart horizontally by double tapping again.

[Note: If crosshairs are disabled, you only need to swipe with one finger to scroll.]

## Adding Indicators/Studies

Click on the “Studies” dropdown from the center of the main toolbar to see all 80+ studies and indicators. Click on one to add it to your chart. Note that studies and indicators, like drawing and annotations, will remain on your chart for a specific symbol any time you open it on any device until you delete them from the chart.

To delete an overlaid indicator, simply right-click on it. Other indicators will appear in separate windows below the chart. These windows can be resized or moved using their buttons in their upper left corners.



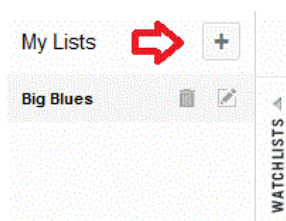
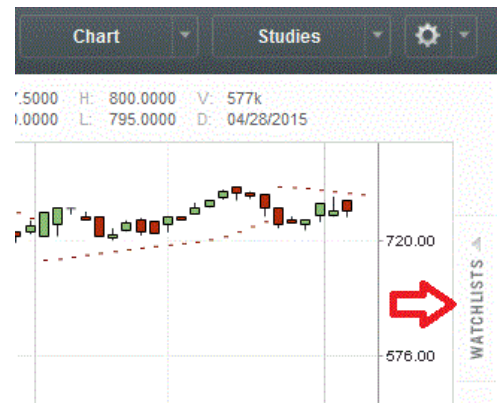
The up arrow will reorder the study one window higher. The broken square icon will expand the indicator’s window and temporarily obscure other indicators from view. Click it again to restore your previous view. The down arrow will reorder the study one window lower. The settings button will allow you to edit the indicator’s parameters. While the “X” button will remove the indicator from the view.

Compare	Chart	Studies
Accumulative Swin...	Ease of Movement	Median Price
ADX/DMS	Ehler Fisher Transf...	Momentum Indicator
Alligator	Elder Force Index	Money Flow Index
Aroon	Elder Impulse Sy...	Moving Average
Aroon Oscillator	Elder Ray	Moving Average En...
Average True Range	Fractal Chaos Bands	Negative Volume In...
ATR Bands	Fractal Chaos Osci...	On Balance Volume
ATR Trailing Stops	Gopalakrishnan Ra...	Parabolic SAR
Awesome Oscillator	Gator Oscillator	Performance Index
Bollinger Bands	High Low Bands	Pivot Points
Bollinger %b	High Minus Low	Positive Volume Index
Bollinger BandWidth	Highest High Value	Pretty Good Oscillator
Center Of Gravity	Historical Volatility	Price Momentum O...
Chaikin Money Flow	Ichimoku Clouds	Price Oscillator
Chaikin Volatility	Intraday Momentu...	Price Rate of Change
Chande Forecast O...	Keltner Channel	Price Relative
Chande Momentu...	Klinger Volume Os...	Price Volume Trend
Commodity Chann...	Linear Reg Forecast	Prime Number Ban...
Choppiness Index	Linear Reg Intercept	Prime Number Osc...
Coppock Curve	Linear Reg R2	Pring's Know Sure ...
Detrended Price O...	Linear Reg Slope	Pring's Special K
Disparity Index	Lowest Low Value	QStick
Donchian Channel	MACD	Rainbow Moving Av...
Donchian Width	Market Facilitation I...	Rainbow Oscillator
	Mass Index	Random Walk Index
		RAVI
		Relative Vigor Index
		Relative Volatility
		RSI
		Schaff Trend Cycle
		Standard Deviation
		Stochastics
		Stochastic Moment...
		Swing Index
		Trade Volume Index
		TRIX
		True Range
		Twiggs Money Flow
		Typical Price
		Ulcer Index
		Ultimate Oscillator
		Vertical Horizontal F...
		Volume
		Volume Oscillator
		Volume Profile
		Volume Rate of Ch...
		Volume Underlay
		Weighted Close
		Williams %R
		Williams Accumula...

## Creating Watchlists

Clicking on “Watchlists” on the right sidebar will open up the Watchlists panel where you can create, view, and organize your lists.

To add a new watchlist, click “New List”. In the resulting window, give your watchlist a name and then, in the large textbox, enter a list of symbols, separated by spaces. Clicking “Save” will add this new list to your “Watchlists” panel.

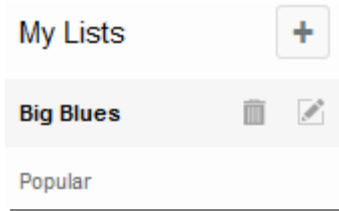


Watch List Name:

Once your list has been created you will see a vertical list of your securities on the right. Simply click on a security code to choose it as the active security to be displayed on the chart.

You can also click on the Up - Down Arrow cursors located on the top and bottom of your list to scroll it up or down from the last activated security.

You can add several lists to monitor.



If you need to edit your current list, press on the Pencil icon to open an edit box and remember to save any new choices you make.

To delete a list, click on the Trash can icon.

